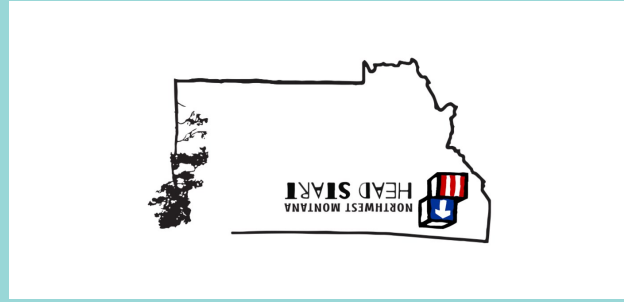


2020-2021



Please visit us at [nwmtheadstart.org](http://nwmtheadstart.org) or call 406-752-7011.

## HEAD START PROGRAM

For more information on our



# Annual Report 2020-2021







# Locations and Contact Information

## NORTHWEST MONTANA HEAD START CENTERS

### TOBACCO VALLEY

335 6TH STREET  
EUREKA, MT 59917  
PHONE: 406-297-5507

### KALISPELL / MAIN OFFICE

79 7TH AVENUE EN  
KALISPELL, MT 59901  
PHONE: 406-752-7011

### NORTH VALLEY

80 RAILROAD STREET  
COLUMBIA FALLS, MT 59912  
PHONE: 406-892-4144

-Please visit us at-  
<http://nwmtheadstart.org>



# School Readiness

The successful transition from Head Start to kindergarten is a major focus of NWMTHS. Through partnerships with kindergarten teachers, elementary principals, and family we strive to make certain each child transitions successfully to kindergarten. Transition activities are carried out with surrounding school districts where the Head Start children will attend kindergarten. These activities include parent training, meetings with school staff, and a transition checklist. The checklist offers information on how the parents as well as the teacher see the child in terms of going forward to kindergarten. With parent permission, information is shared with the receiving school. Transition meetings are also held for children with disabilities.

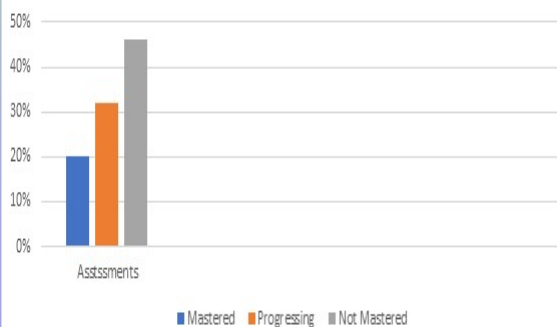
Northwest Montana Head Start operates 10 classrooms. Throughout the program year, our teaching staff implements the research-based curriculum Opening the World of Learning (OWL). OWL is used as the framework for an integrated teaching approach which includes social-emotional, physical, cognitive, and language development. Teachers use the assessment information to develop lesson plans and to have a tool to individualize each child's learning. Classroom staff also practices Conscious Discipline which helps teach children appropriate behavior and self-regulation techniques.

The OWL assessments are intended to assess the kindergarten readiness of 4 year olds. However all NWMTHS children are assessed regardless of age. The outcome data reflects scores of all children in the program, including 3 year olds and those with developmental delays.

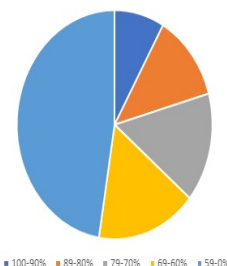
## Mental Health

Children's mental health is important at NWMTHS. Our Mental Health Specialist provides in class support to children with challenging behaviors, teaches lessons about social emotional learning, provides parent education and partners with local mental health providers. During the 20-21 SY, 28 referrals were made, 92 classroom observations were conducted, and 75 recommendation meetings were held.

Students Assessed: 160  
Students Not Assessed: 20  
Total Number of Standards: 52  
Data as of: 5/3/2021



Average Test Scores



\*Due to curriculum publisher termination of the OWL online assessment, the above data does not reflect all outcomes. The data gathered is from a center developed assessment. Therefore, the outcomes are not able to be broken down by developmental domains. Developmental domains missing are social and emotional, language and communication, fine arts, and physical development.

# Mission, Vision, and Core Values

## Mission

Northwest Montana Head Start Promotes the well-being and self-sufficiency of children and their whole family by providing opportunities in a nurturing environment.

## Vision

Northwest Montana Head Start Board of Directors, Staff and Parents collaborate with community resources to provide quality services that empower families and advocate for children.

Northwest Montana Head Start program focus is on strengthening the social, nutritional, emotional, physical and educational well-being of the whole family

Northwest Montana Head Start strives to create positive and fulfilling work environments thereby encouraging continuity of qualified competent staff.

Northwest Montana Head Start is a comprehensive early childhood program that serves three to five-year-old children and their families. Children must be three years of age at enrollment and may not turn five after the September public school cutoff date each year. Families must meet federal poverty guidelines for their children to attend Head Start. The program provides comprehensive services for its qualifying families including: nutritional, educational, social, health, disability, and parent involvement opportunities. Children with disabilities are also included and receive a variety of additional services such as one-on-one assistance in the classroom, as well as speech, occupational, and physical therapy.

The over-arching focus of the Head Start program is that of quality early childhood development and experiences in order to prepare children when entering kindergarten with the tools they need to be ready to learn and adapt.

Northwest Montana Head Start submits its annual grant application to the Regional Office in Denver. The grant is due 90 days prior to the beginning of the new grant year. The grant year for NWMTHS runs June 1st to May 31st each year. NWMTHS's grant must be submitted yearly to the Regional Office by March 1st. The grant is written in compliance and with instruction from the Administration for Children and Families (ACF).

Northwest Montana Head Start (NWMTHS) is a single purpose, not-for-profit agency which serves 192 children and their families in the Flathead and northern Lincoln counties of Montana. The funded enrollment of 192 children must be maintained throughout the program year in accordance with federal regulations.



3 | Centers

Kalispell

Eureka

Columbia Falls



1 | Half-Day Class  
2 | Full-day Classes



4 | Half-Day Classes  
2 | Full-day Classes



1 | Full-Day Class



56 | Funded Enrollment



118 | Funded Enrollment



18 | Funded Enrollment

122

Kalispell Families Served

48

Columbia Falls Families Served

13

Whitefish/Canyon Families Served

16

Eureka Families Served

# Parent, Family, & Community Partnerships

Families are offered the opportunity and encouraged to participate in shared governance as well as various parent activities throughout the year. Active family involvement is crucial to the program's continued success. Involvement in shared governance includes membership of NWMTHS's Policy Council (PC), where parents elect representatives from each classroom to serve. Families are also very involved in NWMTHS through volunteering in the classroom, participation in health and developmental screenings for their children, and attending program orientation prior to the beginning of classes.

## Highlights of NWMTHS's Parent Involvement Activities Parents & Guardians Participated in:

- Virtual Family Fun Events
  - Family Training Workshops
  - Parent Teacher Conferences
  - Home-to-school Activities
  - Parent Meetings
  - Home Visits
  - Substituting for staff
  - Component Committees
  - Food, craft, & project preparation at the center
- As a mitigation strategy for the pandemic, families were unable to participate in the following activities, however, we are looking forward to next year!
- Class meal time
  - Classroom Volunteering

## We have many formal and informal partnerships throughout the community, including:

- Flathead City-County Health Department
- Lincoln County Health Department
- Child & Family Services
- Healthy Montana Families
- Nurturing Center
- Child & Family Services
- Abbie Shelter
- Best Beginnings Council
- Local School Districts
- United Way
- Child Development Center
- Flathead Food Bank
- Community Action Partnership



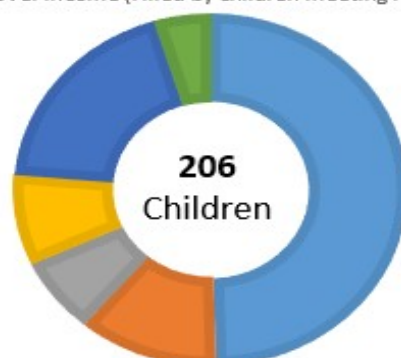
# Enrollment & Attendance

Total Children Served: **206**

Due to turnover, the program serves more than funded each year. Approximately 23% of the income eligible children aged 0-5 in our community was served.  
**\*Due to the ongoing COVID-19 Pandemic, NWMTHS was not fully enrolled during the 2020-2021 School Year**

## ELIGIBILITY OF ENROLLED STUDENTS

- 100 children Income eligible (at or below 100% of the poverty line)
- 33 children Income between 101-130% of the poverty line
- 7 children Receive Public Assistance (such as TANF)
- 11 children In Foster Care
- 44 children Considered Homeless
- 11 children Over income (Filled by children meeting high risk guidelines)



**90%**

Average Daily Attendance

# Comprehensive Services



**89%**

Percent of children were up to date on their Developmental screening

**90%**

Percent of children were up to date with well child and dental visits

**77%**

Percent of children have completed lead tests

**96%**

Percent of children up to date on Immunizations

**83%**

Percent of children received hearing, & vision assessments



**41,369**

Meals prepared in our Kalispell and NV Kitchens

**3,208**

Meals prepared by the Eureka School District

# Disabilities

**11%**

Children were Identified as children with disabilities and had an IEP through the school district

**9**

Had an IEP under the disability category of Speech and Language

**8**

Had an IEP under the disability category of Developmental Delay

**5**

School district referrals made  
1 referral not yet completed by end of school year

**67**

Children received either Occupational Therapy or Speech & Language Therapy Services at NWMTHS Head Start.



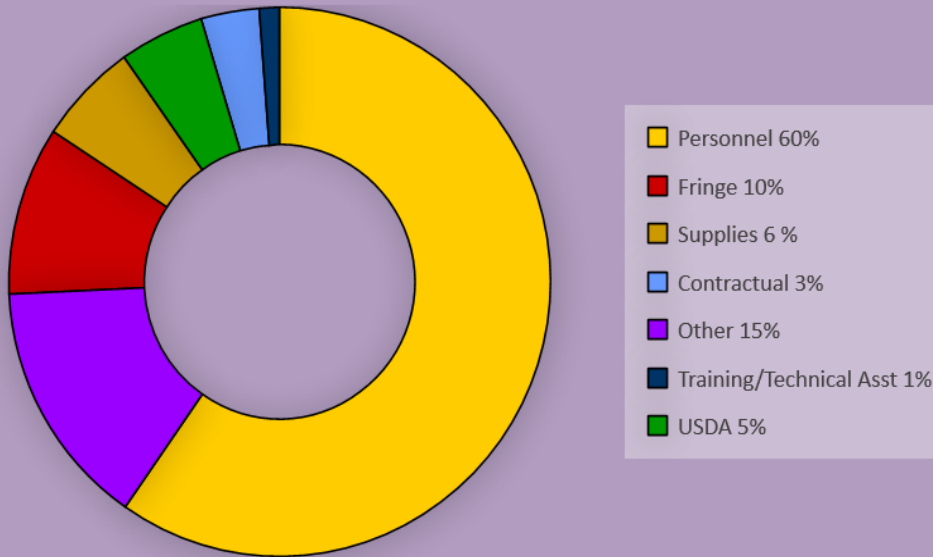
# Financials

## 2020-2021 Expenditures (FY51)

Northwest Montana Head Start's federal program expenditures for the 2020-2021 operating year were \$2,040,139. The largest portion of these funds were allocated to personnel costs.

Each year, Northwest Montana Head Start is audited on its' financial reporting. In fiscal-year 51 the auditor's found no instances of noncompliance or other matters that are required to be reported under Government Auditing Standards.

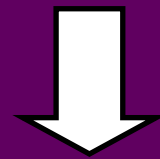
### FY 51 Actual Expenditures



## 2020-2021 (FY51) Non-Federal Share

**Non-Federal Share (In-Kind):** For every dollar Head Start spends we must have a match of 25 cents, which is represented by In-Kind contributions. Our non-federal share is garnished from donations of cash, time, supplies, mileage, etc.

FY51 Budgeted In-Kind Donations:  
**\$510,034**



FY 51 Actual In-Kind Donations:  
**\$372,001**

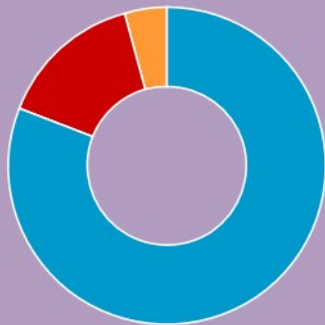
Due to the ongoing COVID-19 pandemic, a NFS waiver was requested and granted.

## 2020-2021 Funding

The program received funds from a Federal HS Grant, Non-Federal (In-Kind) Funds, and the USDA.

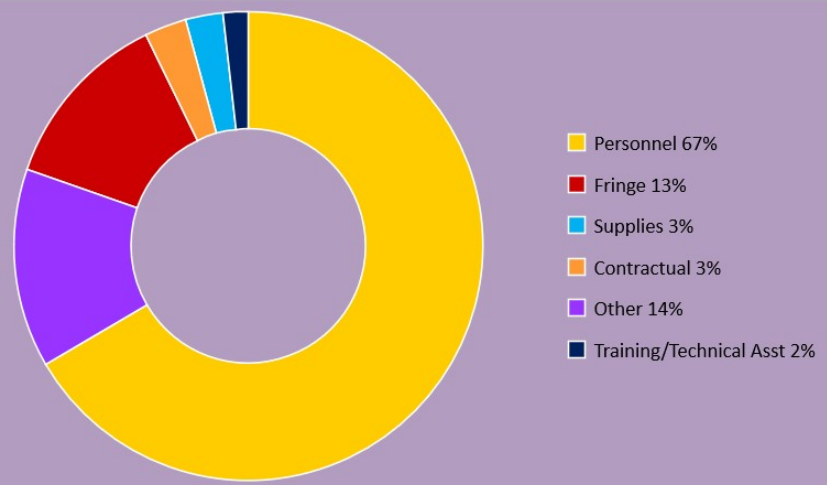
The Funds from the USDA through the states child & adult care food program are based on a reimbursement program. The amount received depends on the number of meals served to Head Start children.

**\$2,521,211**



- USDA \$109,071
- In-Kind \$ 372,001
- Federal Grant \$2,040,139

## 2021-2022 Federal Budget (FY52) \$2,064,746



NWMTS had a Focus Area 1 Monitoring Review in October 2019. Review results were favorable in all areas. Noted improvement was indicated in supporting Dual Language Learners. Program Goal created as a result.